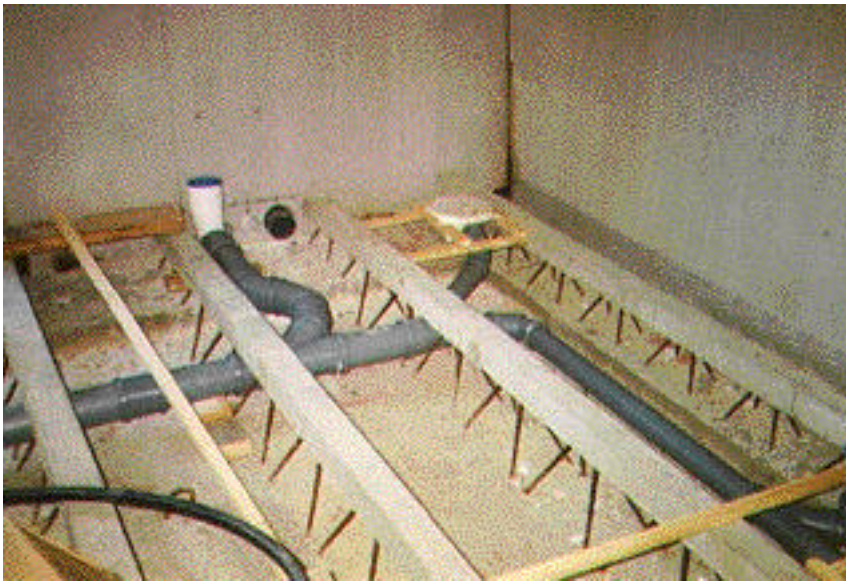




NCC erects eight semi-detached hillside houses in Bollstanäs, Upplands Väsby, Stockholm.

## INSTALLATIONS

### SEWAGE



Sewage pipes from shower, toilet and washing machine at bottom floor.

Easily accessible in the future.



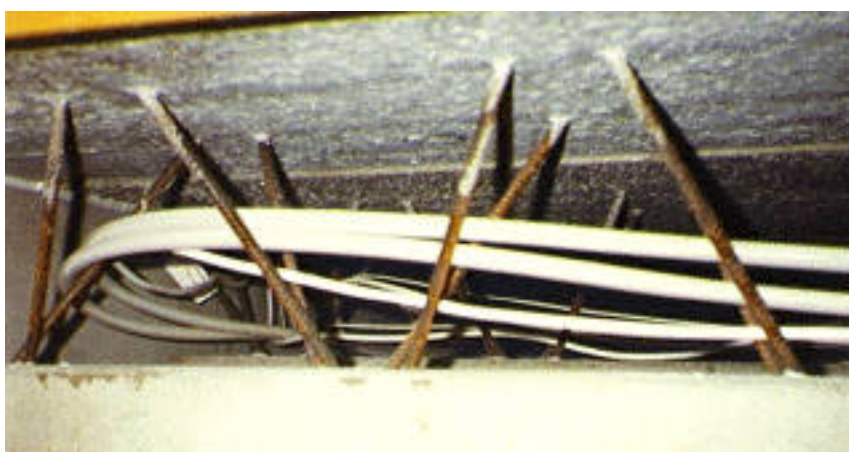
Common throughout for waste pipe and exhaust air down into the ground through the bottom structural floor concrete plate.



Sewage pipes from bath and toilet at upper floor is invisibly installed inside the structural upper floor.

Easily accessible in the future.

### ELECTRICAL INSTALLATIONS



The electric installation work goes very fast inside the structural floor.

Easily accessible in the future.

### INTERIOR WALLS & CEILING



The picture is taken at the stairwell and shows the interior walls with one side boarding.

The ceiling on steel studs can be seen below the Resaro structural floor.

Electrical cables for stair lighting.  
(A steel stud stands leaning against the corner)

## HEAT AND VENTILATION UNIT



### Rough filter.

All circulation air together with the ventilation air passes two filters before it enters the living rooms.

The rough filter is simply cleaned about two times a year by giving it a shower in the bathtub.

A pressure guard tells you when it is time.



### Fine filter:

A bag filter with standard dimensions and big filter areas.

The fine filter, of which you settle the fineness, needs to be changed every second year.

A rapid connection system facilitates the change.

All filth which gets caught in the filters you are spared from inhaling.

There are space enough for an alternative electrostatic filter.  
New filter models of Gore Tex which can be washed and recycled is developing.

RESARO AB, 185 94 Vaxholm, Tel & Fax+46 (0)8 541 37 800, E-mail: [wegler@resaro.se](mailto:wegler@resaro.se)