



**NCC Bostad Stockholm Norr** erects four semi-detached hillside houses in Bollstanäs, Upplands Väsby, Stockholm.

## T H E F O U N D A T I O N



**F**oundation work at the cold season, no problem.

**E**ven surface layers without levels results in a fast laying of ground.

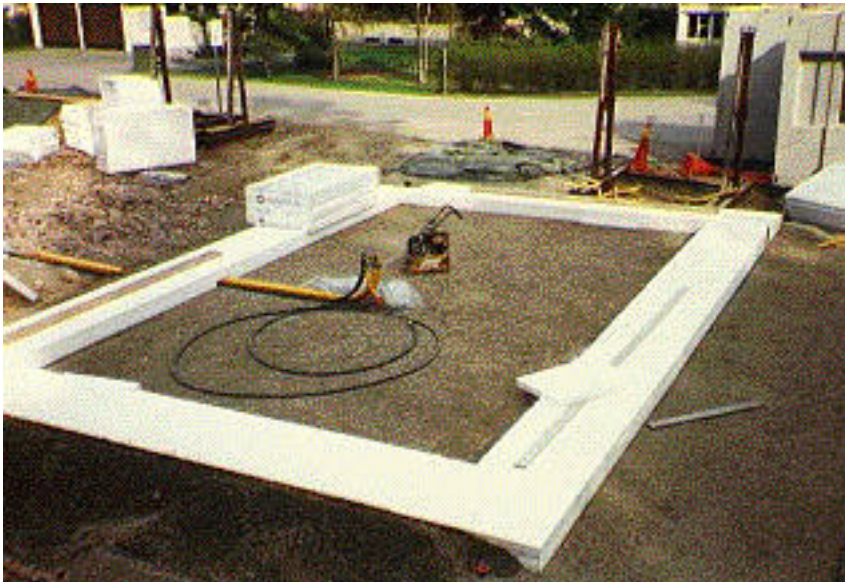


**E**asy to work.

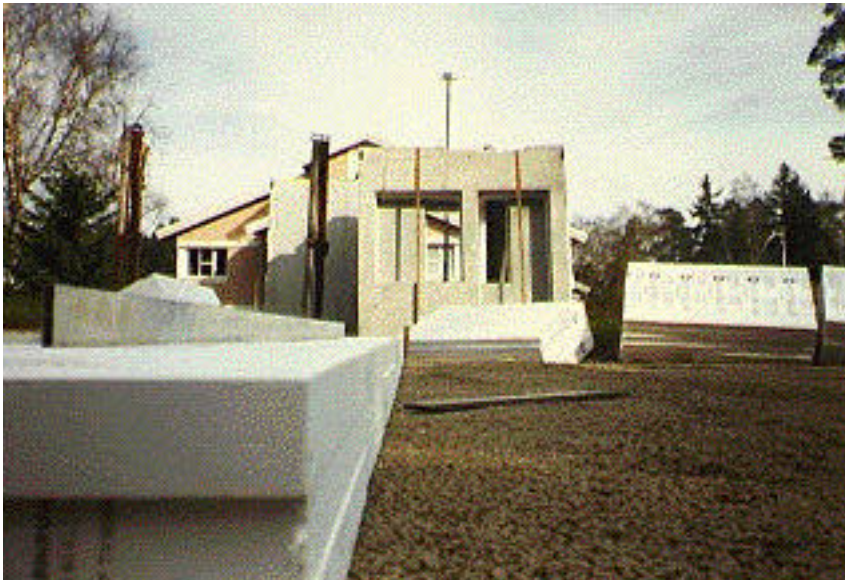


**A**n even drainage bed above a particularly strong all over welded radon proof tarpaulin.

**T**he green tarpaulin covers temporarily against frost.



The gravel bed carries the supporting thermal insulation which in turn supports the bottom floor elements which are self suspended like the upper floor elements.



The straight ruler shows NCC's precision



The inner parts of the foundation is now insulated.

The insulation encloses both the bottom floor elements and the outer wall elements with a constant even thickness.

No cold bridges outwards to the winter cold or downwards to the ground.